

持ち出し厳禁

CCT2025 Live Cases

Peripheral

EVT Live Theater

Thursday, October 23



## EVT Toyohashi Case 1

70's Male Target Lesion: Rt,SFA CTO

Diagnosis ■ LEAD

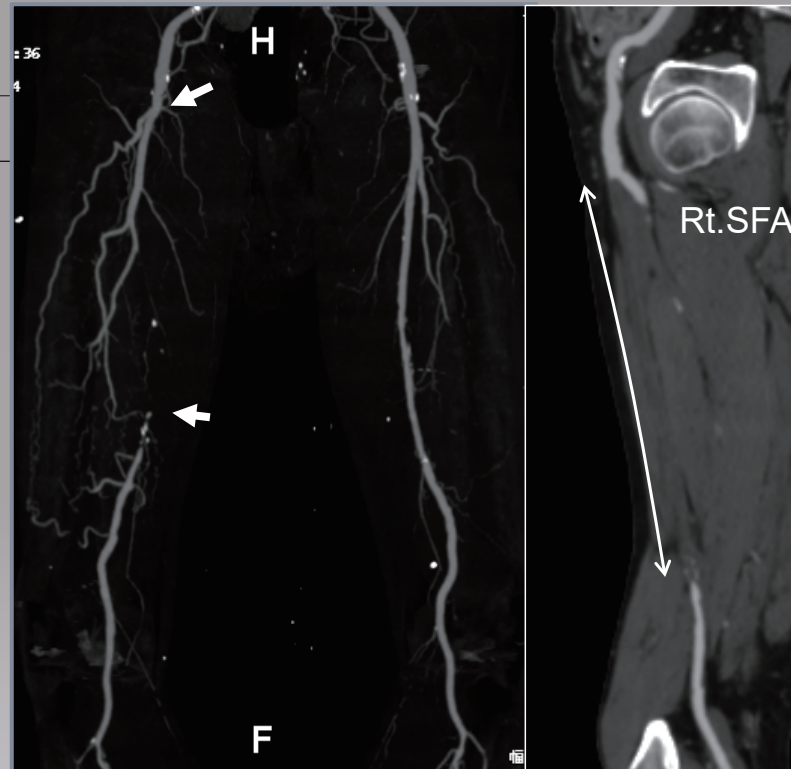
Prior EVT ■ None

Risk factor ■ HT

ABI ■ R=0.64, L=0.96

Rutherford ■ 3

eGFR ■ 70.2mL/min/1.73m<sup>2</sup>



## EVT Toyohashi Case 2

80's Female Target Lesion: Rt,CIA CTO

Diagnosis ■ LEAD, PAF(post stroke), RMI, CHF

Prior EVT ■ None

Risk factor ■ DM, DL, Past smoking

Rutherford ■ 2

eGFR ■ 68.6mL/min/1.73m<sup>2</sup>



## EVT Toyohashi Case 3

70's Male Target Lesion: Rt,SFA CTO

Diagnosis ■ LEAD, Contrast allergy

Prior EVT ■ '25.01. EVT stent & POBA (Lt,SFA & BTK)  
'25.10. EVT stent & POBA (Rt,EIA & CFA)

Risk factor ■ HT, past smoking

ABI ■ R=0.40, L=0.84

Rutherford ■ 3

eGFR ■ 59.9mL/min/1.73m<sup>2</sup>



## EVT Toyohashi Case 4

70's Male Target Lesion: Lt,SFA CTO

Diagnosis ■ LEAD

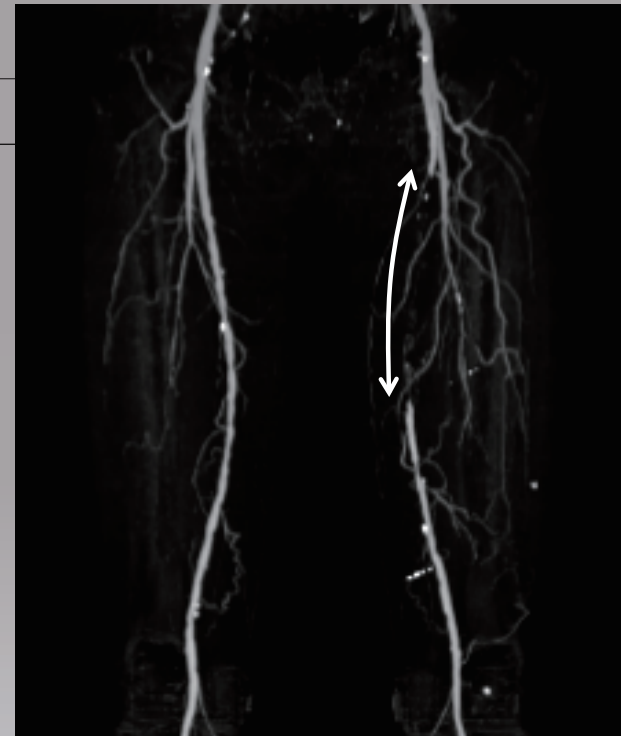
Prior EVT ■ None

Risk factor ■ DM, HT, current smoking

ABI ■ R=0.91, L=0.48

Rutherford ■ 3

eGFR ■ 66.3mL/min/1.73m<sup>2</sup>



## EVT Toyohashi Case 5

60's Female Target Lesion: Rt,SFA restenosis, 2<sup>nd</sup> attempt

Diagnosis ■ LEAD, CKD, AP (post CABG)

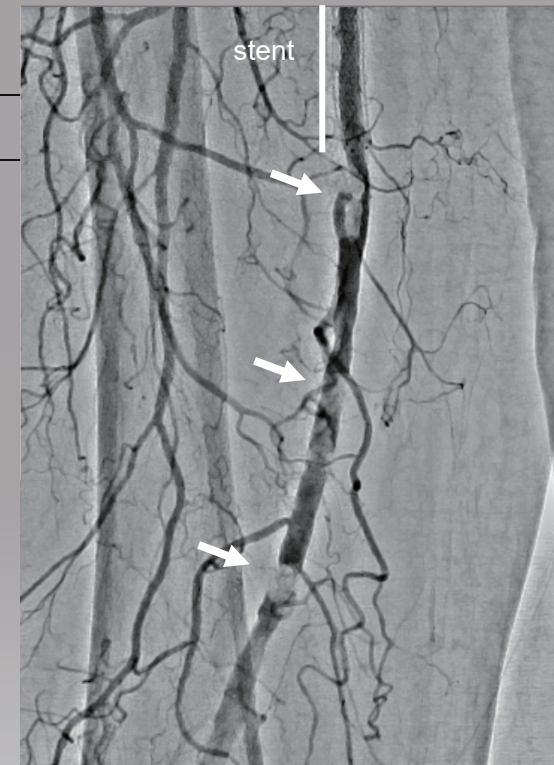
Prior EVT ■ '14.08. EVT stent (Rt,SFA), other hospital  
'20.09. EVT DCB (Bi,SFA)  
'25.02. EVT DCB (Lt,SFA)  
'25.05. Endarterectomy (Rt,CFA-SFA)  
'25.08. Abdominal Aorta-Bi,EIA bypass

Risk factor ■ DM, DL, HT

ABI ■ R=0.48, L=0.67

Rutherford ■ 3

eGFR ■ 27.1mL/min/1.73m<sup>2</sup>



## EVT Toyohashi Case 6

70's Male Target Lesion: Lt,SFA reocclusion, 3<sup>rd</sup> attempt

**Diagnosis** ■ LEAD, AF(post LAAC), AP(post PCI), CKD, Contrast allergy

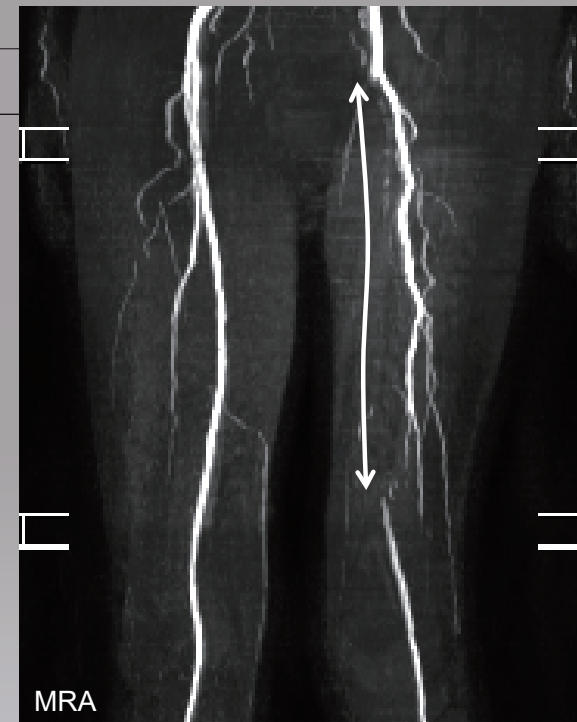
**Prior EVT** ■ '17.02. EVT stent & POBA (Lt,CIA & Rt,SFA)  
'17.06. EVT POBA (Rt,SFA)  
'21.03. EVT stent & DCB (Bi,CIA-EIA & Lt,SFA)  
'21.04. EVT DCB (Rt,SFA)  
'23.10. EVT DCB (Lt,SFA)  
'24.10. EVT DCB (Rt,SFA)

**Risk factor** ■ DL, HT, past smoking

**ABI** ■ R=0.86, L=0.42

**Rutherford** ■ 2

**eGFR** ■ 34.3mL/min/1.73m<sup>2</sup>



## EVT Toyohashi Case 7

70's Female Target Lesion: Rt,SFA CTO, 2<sup>nd</sup> attempt

Diagnosis ■ LEAD

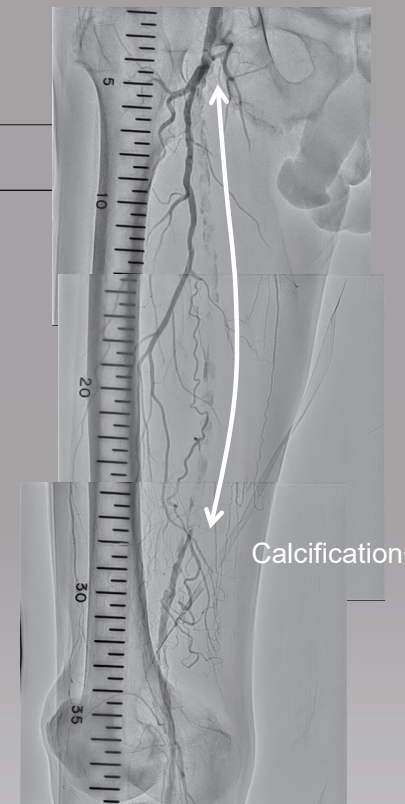
Prior EVT ■ '24.06. EVT stent (Lt,SFA), other hospital  
'25.06. EVT failure, wire not pass (Rt,SFA)  
,other hospital

Risk factor ■ current smoking

ABI ■ R=0.56, L=0.69

Rutherford ■ 3

eGFR ■ 70.5mL/min/1.73m<sup>2</sup>



## EVT Toyohashi Case 8

70's Male Target Lesion: Abdominal Aorta-Bi,CIA

Diagnosis ■ Leriche syndrome

Prior EVT ■ none

Risk factor ■ DM, current smoking

ABI ■ R=0.58, L=0.52

Rutherford ■ 3

eGFR ■ 66.7mL/min/1.73m<sup>2</sup>

