

持ち出し厳禁

CCT2025 Live Cases

Coronary

PCI Live Theater 1

Thursday, October 23



Shinken Case 1

70s female Target Lesion: mid RCA CTO

Diagnosis ■ AP

Prior intervention ■ Oct, 2021 CABG (LITA-LAD, SVG-PL, SVG-PDA)

Aug, 2025 PCI for LMT-LCX

Coronary risk factor ■ DL, DM, Family history of CAD

eGFR ■ 58

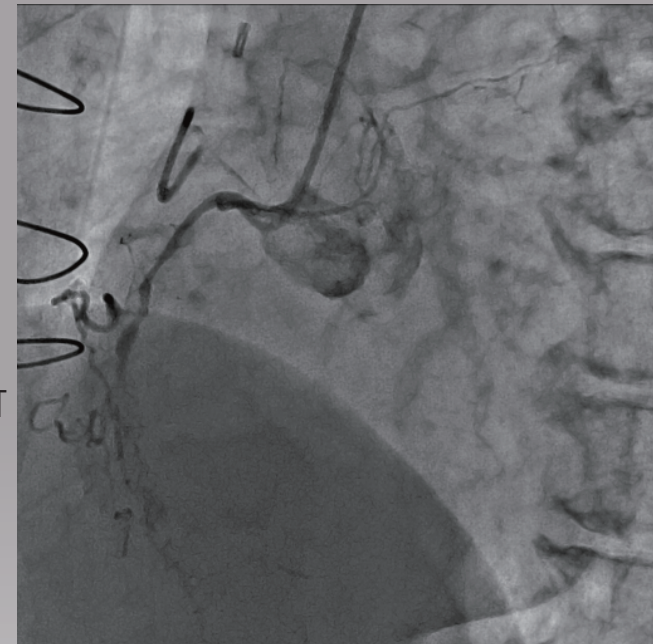
Syntax score ■ 34

Latest CAG findings ■ Aug, 2025 mid RCA 100%, LMT 75%, mid LAD 100%, proximal LCX 75%

Jul, 2025 SVG-PL/ SVG-PDA: occluded

LV EF ■ 64%

J-CTO score ■ 1



LAO View

Shinken Case 2

50s male Target Lesion: mid LCX calcified stenosis

Diagnosis ■ AP

Prior intervention ■ Jun, 2022 CABG (LITA-LAD, RITA-PDA, GEA-OM)
Oct, 2025 PCI for RCA

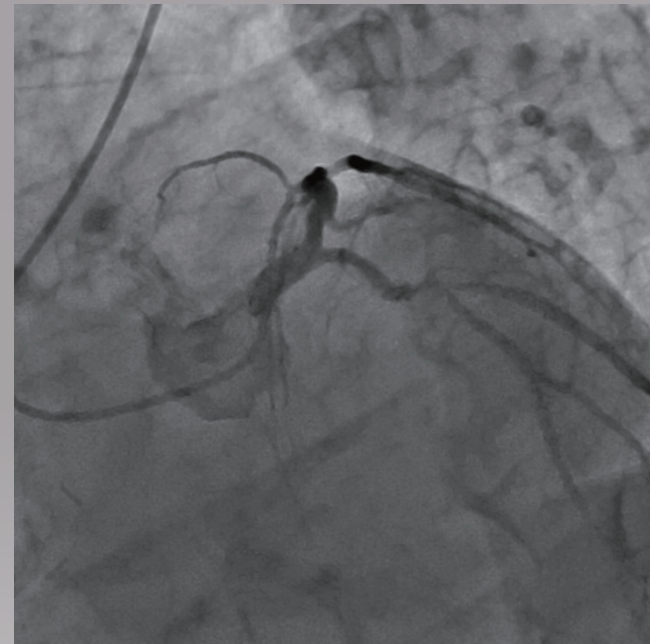
Coronary risk factor ■ DL

eGFR ■ 74

Syntax score ■ 11

Latest CAG findings ■ Oct, 2025 proximal RCA 90%,
mid LAD 90%, mid LCX 90%,
OM 75%, LITA-LAD: patent,
RITA-PDA: occluded, GEA-
OM: occluded

LV EF ■ 61%

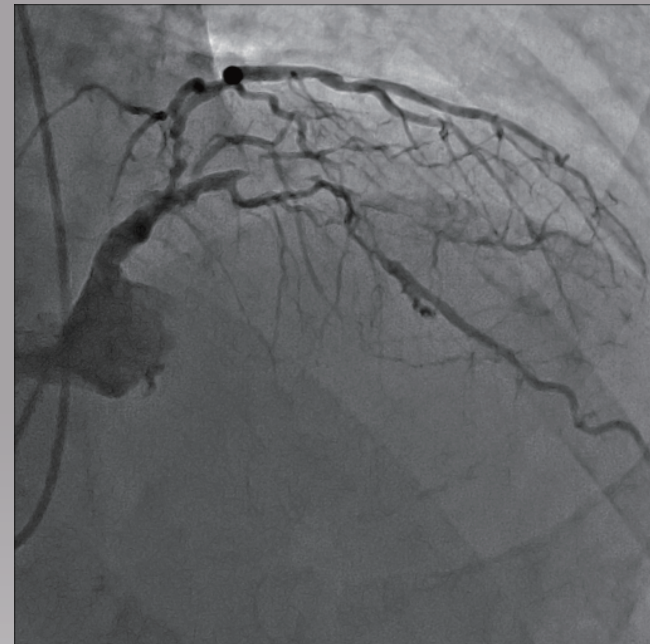


LAO Caudal View

Shinken Case 3

70s male Target Lesion: mid LAD CTO

- Diagnosis** ■ AP
- Prior intervention** ■ Oct, 2025 PCI for RCA
- Coronary risk factor** ■ HT, Family history of CAD
- eGFR** ■ 57
- Syntax score** ■ 33
- Latest CAG findings** ■ Sep, 2025
proximal-distal RCA stenosis,
mid LAD occlusion, proximal-
mid LCX stenosis
- LV EF** ■ 70%
- J-CTO score** ■ 1

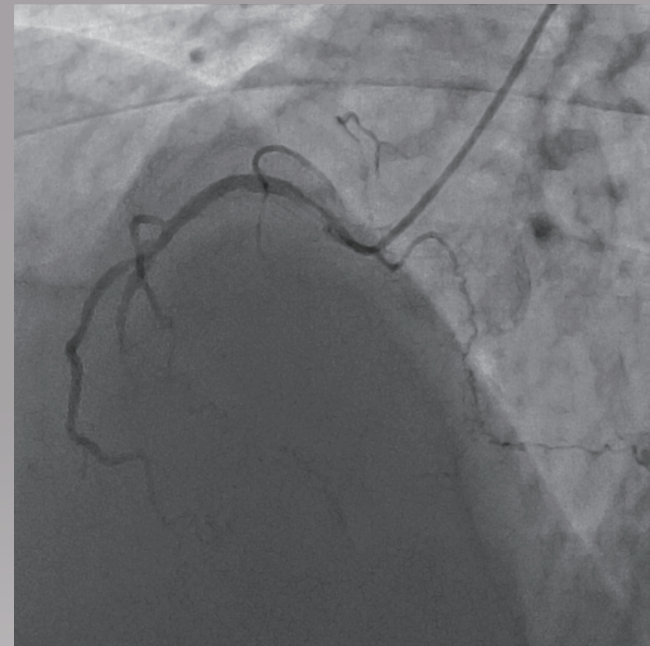


RAO Cranial View

Shinken Case 4

40s male Target Lesion: mid RCA CTO

- Diagnosis** ■ SMI
- Prior intervention** ■ none
- Coronary risk factor** ■ HT, HL
- eGFR** ■ 61
- Syntax score** ■ 10
- Latest CAG findings** ■ Oct, 2025
mid LCX occlusion
- LV EF** ■ 68%
- J-CTO score** ■ 1 (Occlusion length)

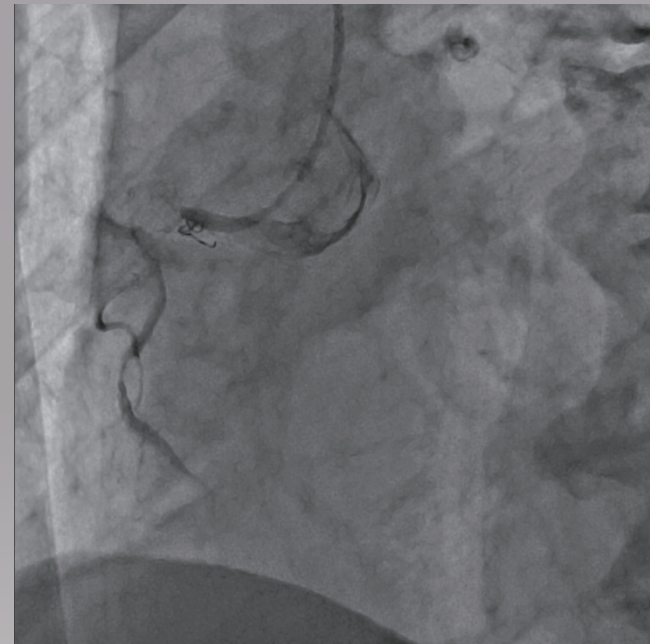


LAO Cranial View

Shinken Case 5

70s male Target Lesion: proximal RCA CTO

- Diagnosis** ■ AP, OMI
- Prior intervention** ■ 2006 PCI for LCX
Apr, 2025 Failed PCI for RCA
Jun, 2025 PCI for LCX
- Coronary risk factor** ■ DL
- eGFR** ■ 56
- Syntax score** ■ 11
- Latest CAG findings** ■ Sep, 2025
proximal RCA occlusion
- LV EF** ■ 49%
- J-CTO score** ■ 3



LAO View