

持ち出し厳禁

CCT2025 Live Cases

Peripheral

EVT Live Theater

Friday, October 24



EVT Kyoto Case 1

70's Male Target Lesion: Rt. Subclavian A CTO

Diagnosis ■ Upper limb claudication

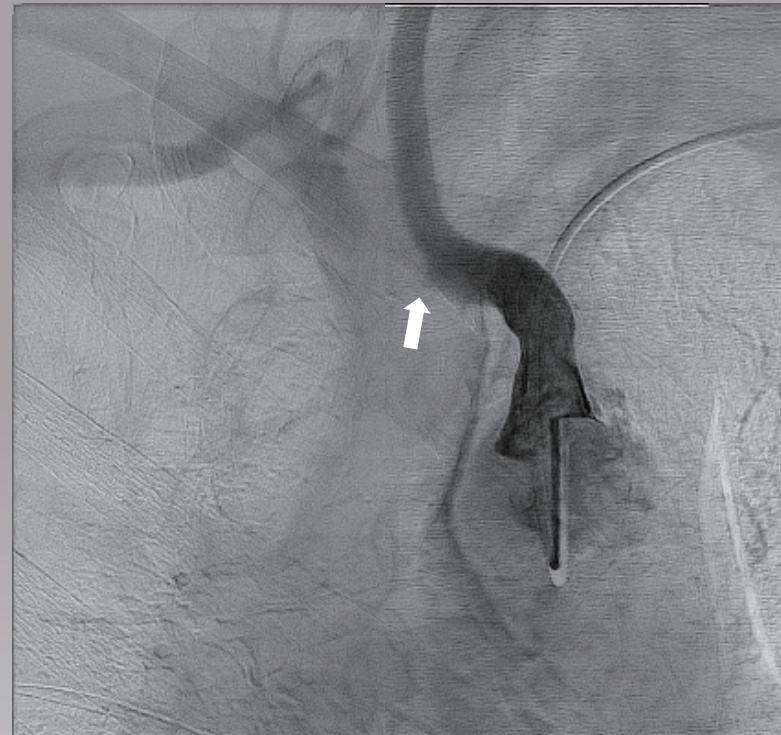
Prior intervention ■ 2025.7 PCI for LCX

Risk factor ■ HT, DL, past smoking

ABI ■ Rt. arm BP96/60, Lt. arm 124/69

Rutherford ■ N/A

eGFR ■ 44.3mL/min/1.73m²



EVT Kyoto Case 2

50's Male Target Lesion: Lt. Pop. A CTO with severe calc.

Diagnosis ■ LEAD (Rutherford 3), CRF on HD

Prior intervention ■ 2023.12 CABG
2025.3 Bilateral CFA endarterectomy

Risk factor ■ HT, DL, past smoking

ABI ■ Rt. 0.54 / Lt. 0.63

Rutherford ■ 3

eGFR ■ 4.3mL/min/1.73m²



EVT Kyoto Case 3

70's Female Target Lesion: Bilateral EIA stenosis, Lt. SFA

Diagnosis ■ LEAD (Rutherford 3)

Prior intervention ■ none

Risk factor ■ HT, DL

ABI ■ Rt. 0.70 / Lt. 0.76

Rutherford ■ 3

eGFR ■ 27.3mL/min/1.73m²



EVT Kyoto Case 4

80's Male Target Lesion: Rt. SFA CTO

Diagnosis ■ LEAD (Rutherford 3)

Prior intervention ■ 2013.3 EVT for Lt. Subclavian A

Risk factor ■ HT, past smoking

ABI ■ Rt. 0.75 / Lt. 0.91

Rutherford ■ 3

eGFR ■ 53.4mL/min/1.73m²



EVT Kyoto Case 5

80's Male Target Lesion: Rt. Popliteal A CTO

Diagnosis ■ LEAD (Rutherford 3)

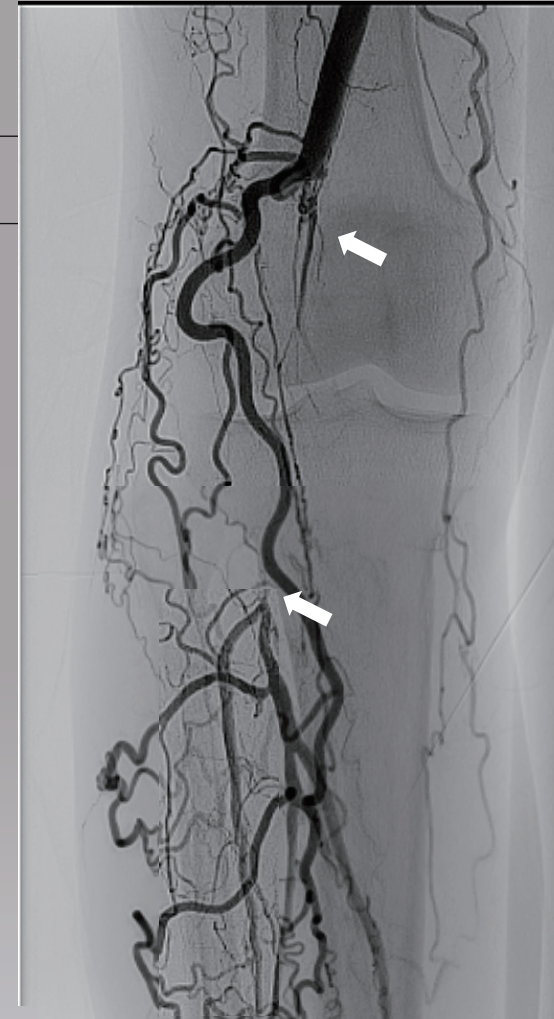
Prior intervention ■ 2012.10 LAA thrombectomy
2016.3 EVT for Rt. Pop. A

Risk factor ■ HT, CAFIB

ABI ■ Rt. 0.69 / Lt. 1.21

Rutherford ■ 3

eGFR ■ 49.7mL/min/1.73m²



EVT Kyoto Case extra

80's Female Target Lesion: Rt. SFA CTO

Diagnosis ■ LEAD (Rutherford 3)

Prior intervention ■ 2024.9 EVT for Rt. SFA (DCB)

Risk factor ■ HT, DL, past smoking

ABI ■ Rt. 0.58 / Lt. 0.83

Rutherford ■ 3

eGFR ■ 34.2mL/min/1.73m²

