

持ち出し厳禁

CCT2025 Live Cases

Coronary

PCI Live Theater 1

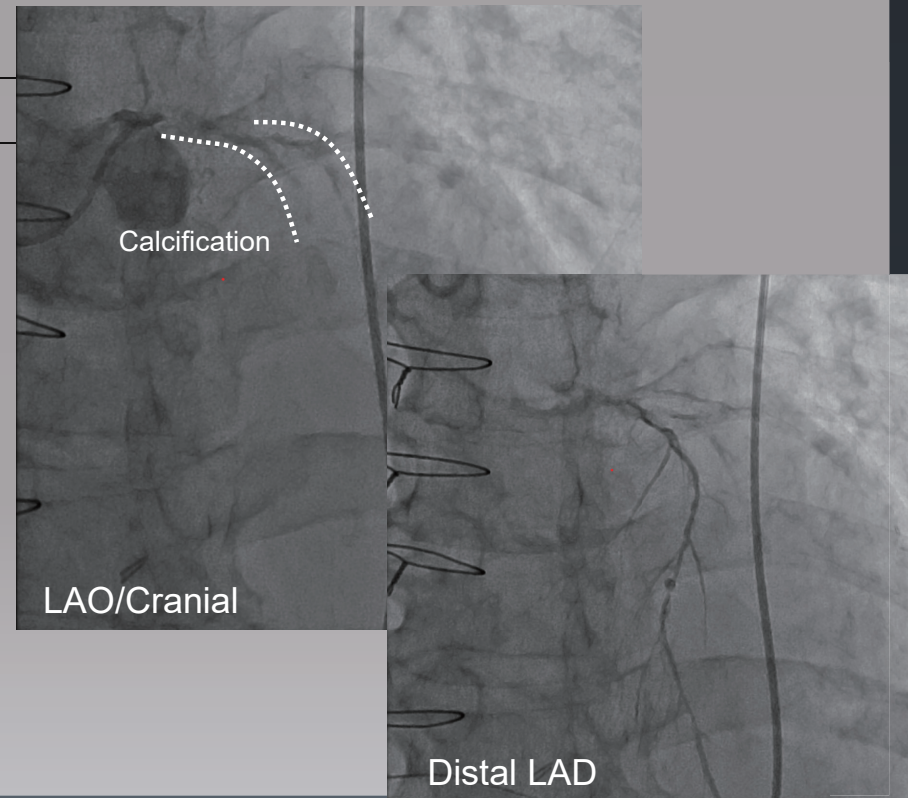
Friday, October 24



Toyohashi Case 1

80's Male Target Lesion: LMT CTO

- Diagnosis** ■ OMI, AP
- Prior intervention** ■ '09.09. CABG
(LITA-LAD, Ao-Ra-diago.-OM,
Ao-SVG-#4PD)
'25.08. EVT stent (Lt,EIA)
- Coronary risk factor** ■ DM, DL, HD
- eGFR** ■ 4.5mL/min/1.73m²
- Syntax score** ■ 30
- Latest CAG findings** ■ '25.08.
LMT 100% (LITA-LAD occlusion)
Ao-SVG-#4PD patent
Ao-radial-#9-12 patent
- LV EF** ■ 49.8%
- J-CTO score** ■ 3



Toyohashi Case 2

70's Male Target Lesion: Prox. LAD CTO

Diagnosis ■ OMI, AP

Prior intervention ■ None

Coronary risk factor ■ HT, Past smoking

eGFR ■ 58.8mL/min/1.73m²

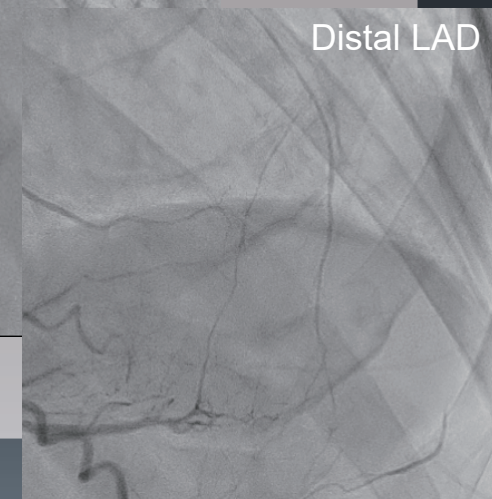
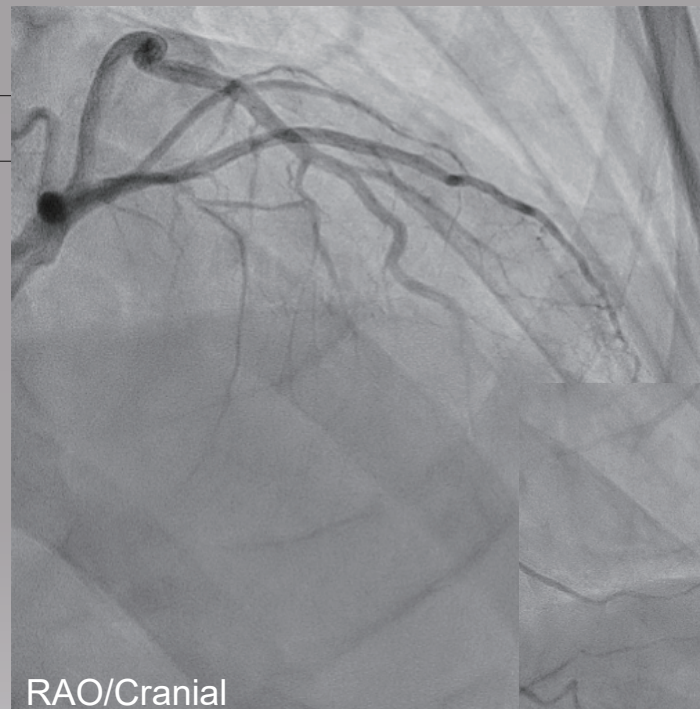
Syntax score ■ 21.5

Latest CAG findings ■ '25.04.
prox. LAD 100%

LV EF ■ 44.0%

J-CTO score ■ 1

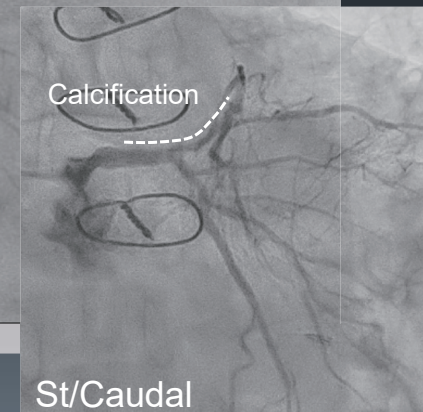
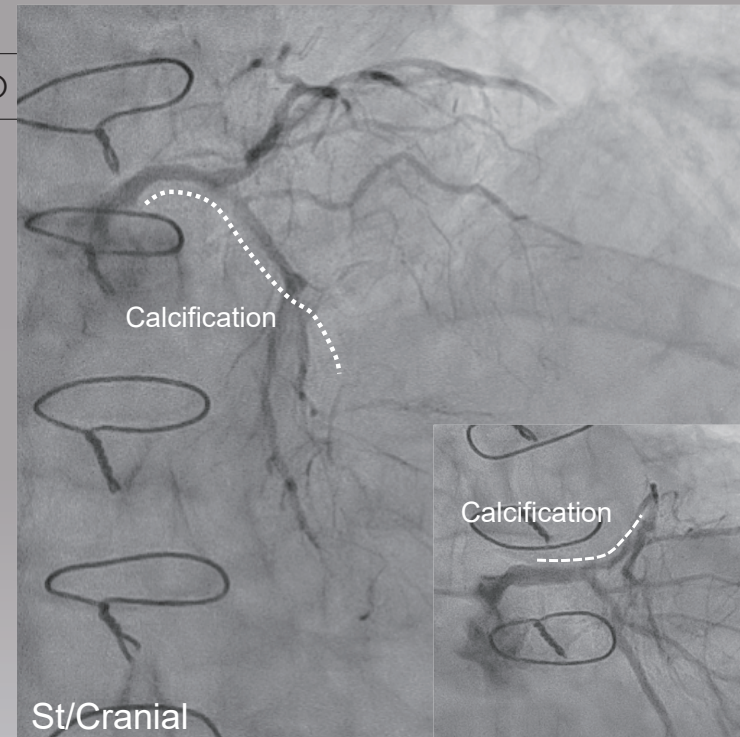
CMR ■ Anterior, Antero-septal ischemia(+)



Toyohashi Case 3

70's Male Target Lesion: LMT bifurcation, Mid. LAD CTO

- Diagnosis** ■ OMI, AP, CKD, Contrast allergy
- Prior intervention** ■ '24.03. CABG(LITA-LAD, Ao-SVG-LCX)
'24.11. PCI stent (Prox. RCA)
- Coronary risk factor** ■ HT, current smoking
- eGFR** ■ 44.9mL/min/1.73m²
- Syntax score** ■ 36.5
- Latest CAG findings** ■ '25.07.
Mid. LAD 100% (LITA-LAD occlusion)
LMT 50-75%, Prox LAD 90%,
Prox.LCX 90% (Ao-SVG-#14 patent)
#4AV, PD branch 90%, Diagonal branch 90%
- LV EF** ■ 46.0%
- J-CTO score** ■ 1
- CMR** ■ Anterior, Antero-septal ischemia(+)



Toyohashi Case 4

70's Male Target Lesion: Mid. RCA CTO

Diagnosis ■ OMI, AP

Prior intervention ■ none

Coronary risk factor ■ DM, DL, HT, past smoking

eGFR ■ 59.9mL/min/1.73m²

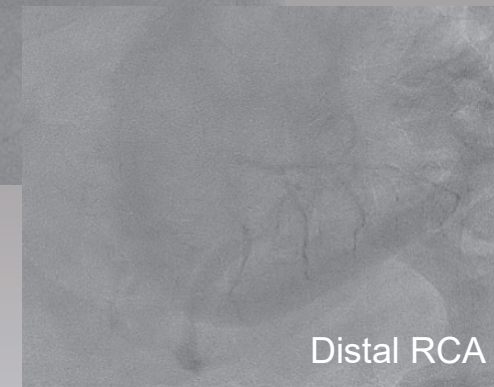
Syntax score ■ 11

Latest CAG findings ■ '25.07.
Mid. RCA 100%

LV EF ■ 62.0%

J-CTO score ■ 1

CMR ■ Inferior, Infero-septal ischemia(+)



Toyohashi Case 5

60's Male Target Lesion: Prox.-mid. LAD

Diagnosis ■ AP

Prior intervention ■ '25.10. PCI stent (Dis. LCX)

Coronary risk factor ■ DM, HT, HD

eGFR ■ 3.2mL/min/1.73m²

Syntax score ■ 15

Latest CAG findings ■ '25.10.

Prox.-mid. LAD 75-90%

Dis. LCX 75% → 0% (stent)

LV EF ■ 55.4%

