

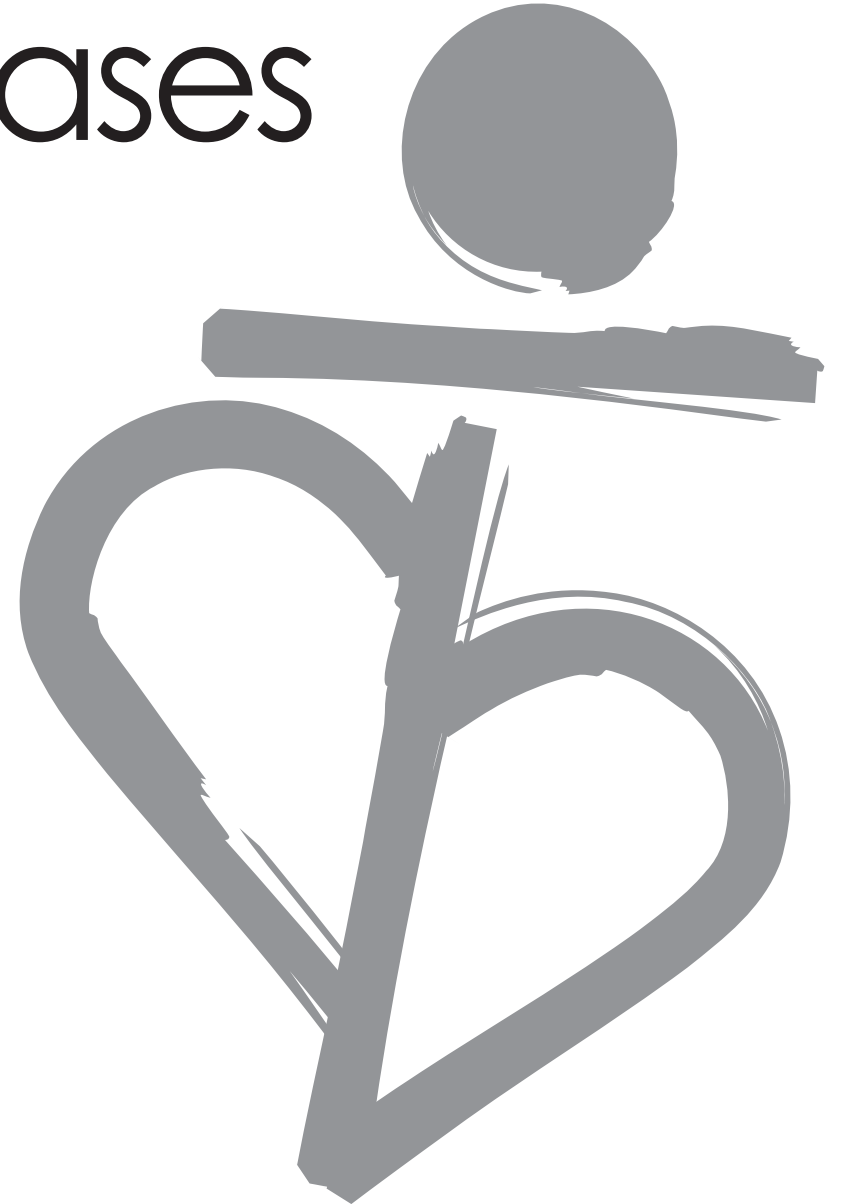
持ち出し厳禁

CCT2025 Live Cases

Coronary

PCI Live Theater 2

Friday, October 24



Sakurabashi Case 1

80's male Target Lesion: LMT – mid LCx

Diagnosis ■ EAP

Prior intervention ■ '25.10.02 EA
(prox. RCA; EES 2.75x28 mm)

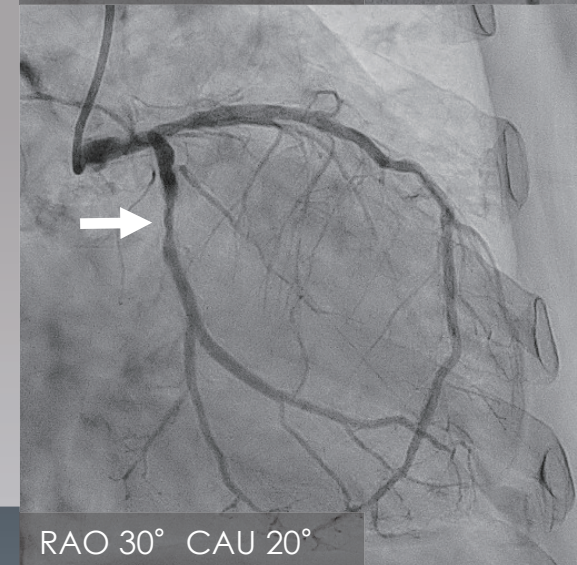
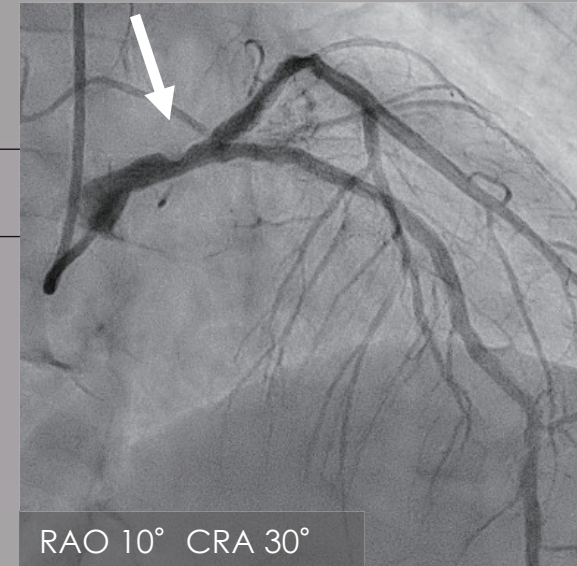
Coronary risk factor ■ Dyslipidemia
Hypertension

eGFR ■ 37.5

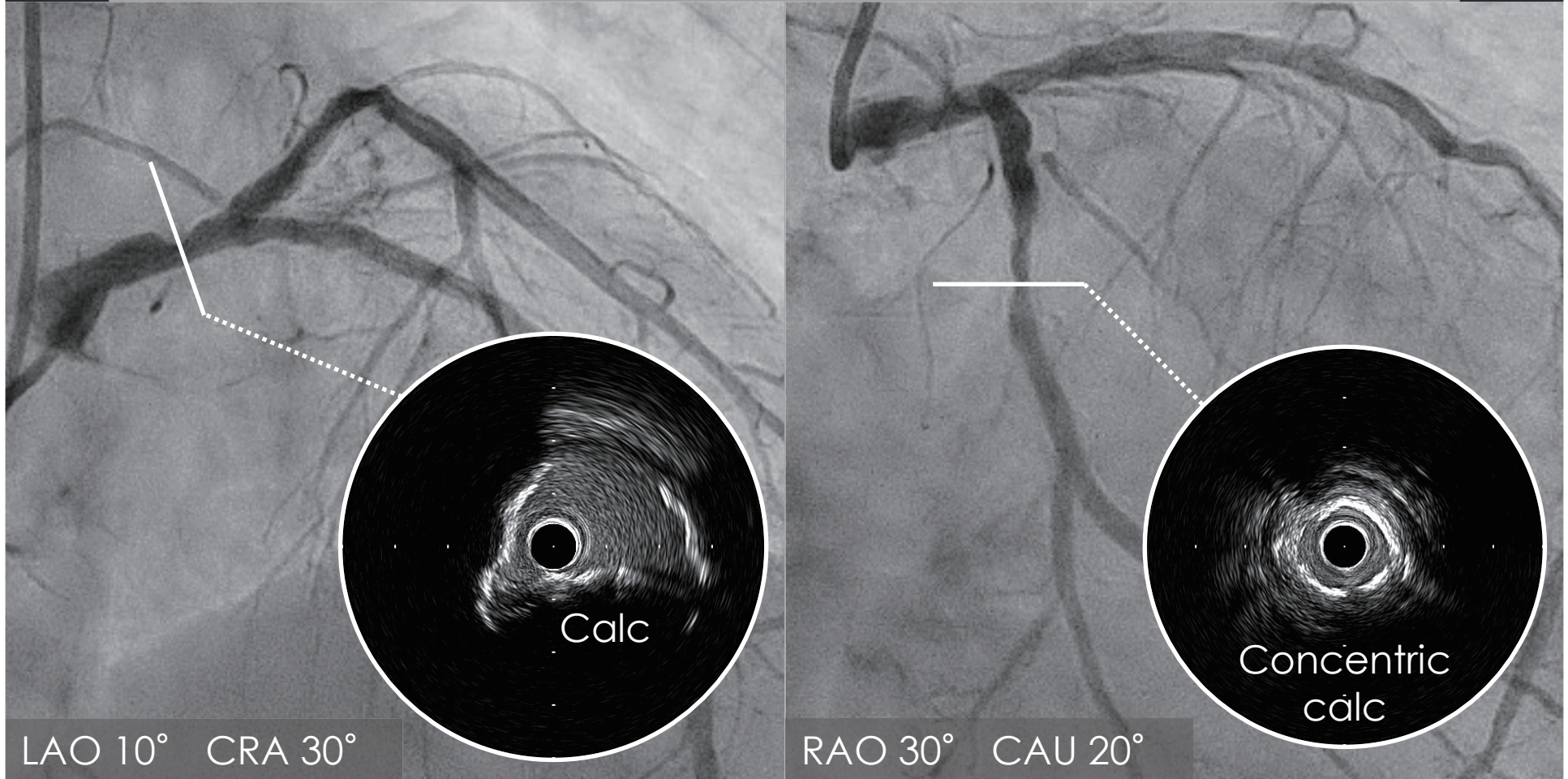
Syntax score ■ 13

Latest CAG findings ■ '25.10.02
LMT mid. 50-75 %, mid LCx 90 %

LV EF ■ 43 % (UCG)



Previous angiogram '25.10.02



LAO 10° CRA 30°

RAO 30° CAU 20°

Sakurabashi Case 2

50's male Target Lesion: mid RCA (CTO)

Diagnosis ■ EAP

Prior intervention ■ '25.09.08 EA
(mid. LAD; BP-SES 3.5x28 mm)
(dis. LAD; BP-SES 2.5x38 mm)
'25.10.03 EA
(mid. LCX; BP-SES 2.75x50 mm)

Coronary risk factor ■ Dyslipidemia
Hypertension

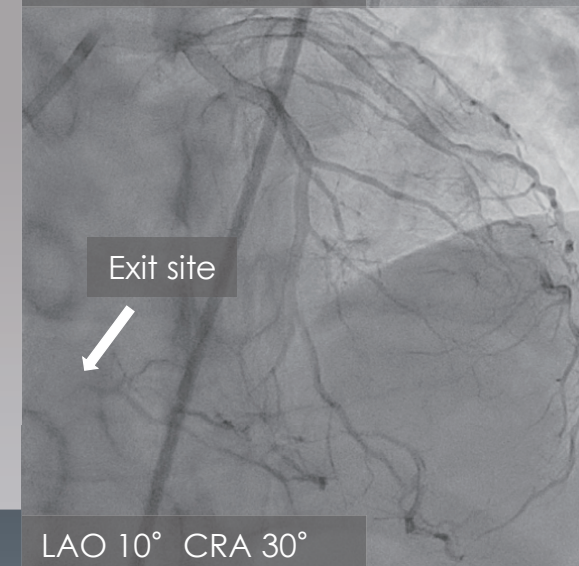
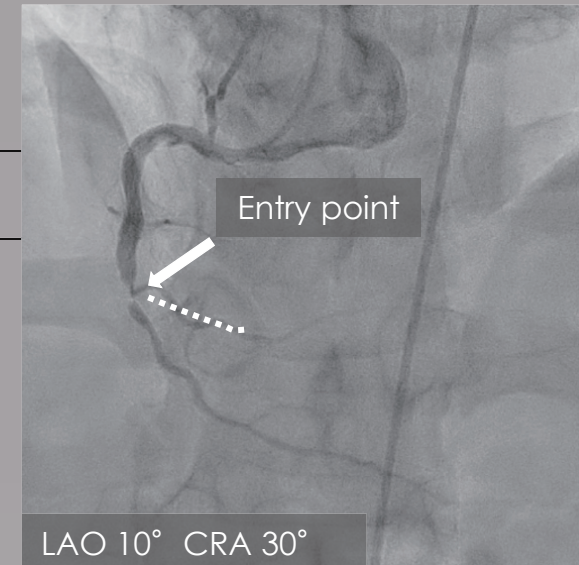
eGFR ■ 51.3

Syntax score ■ 11

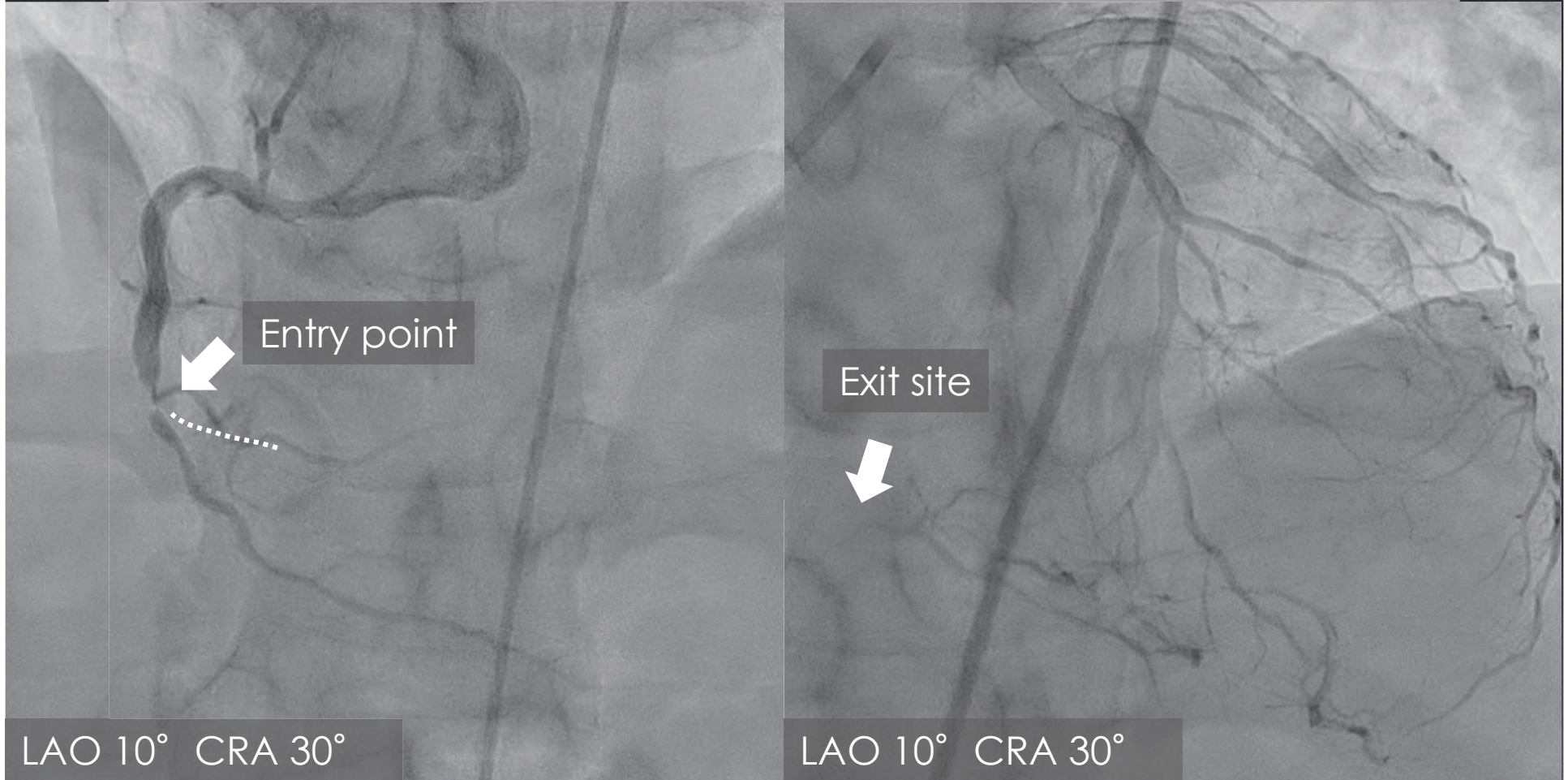
Latest CAG findings ■ '25.10.03
Mid-distal. RCA 100 %

LV EF ■ 69 % (UCG)

J-CTO score ■ 3



Entry/ Exit and collateral information



Sakurabashi Case 3

70's male Target Lesion: mid RCA (CTO)

Diagnosis ■ EAP

Prior intervention ■ '25.09.25 EA
(mid. LCx; U-SES 3.0x28 mm)
'25.10.09 EA
(mid. LAD; X-EES 2.75x38 mm
/2.25x38 mm)

Coronary risk factor ■ Dyslipidemia
Hypertension

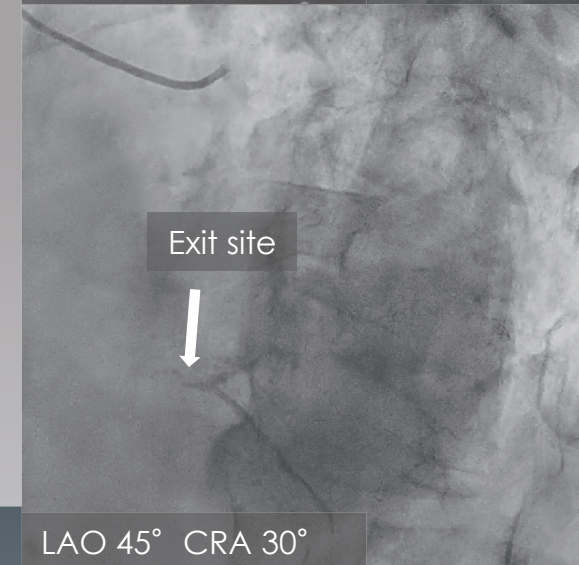
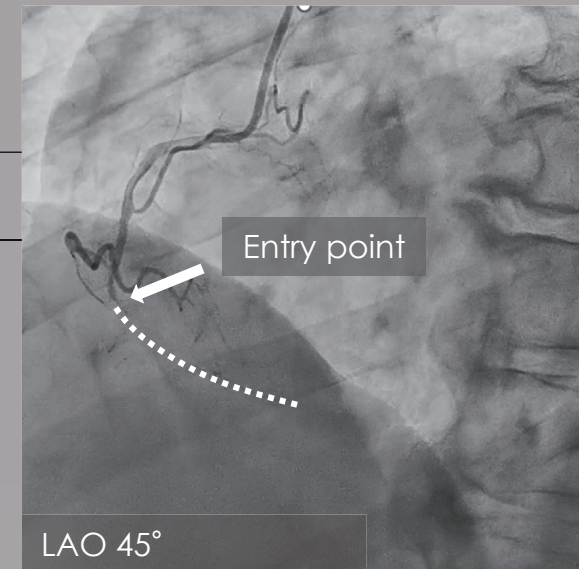
eGFR ■ 64.4

Syntax score ■ 11

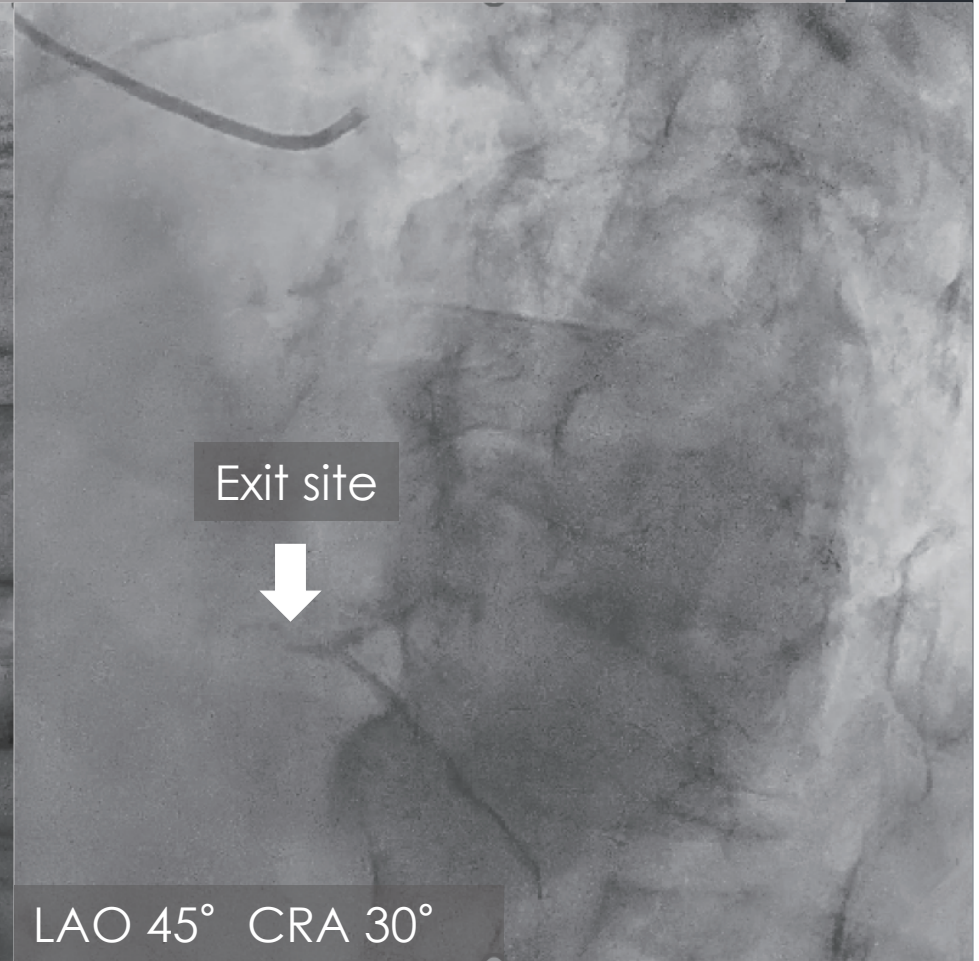
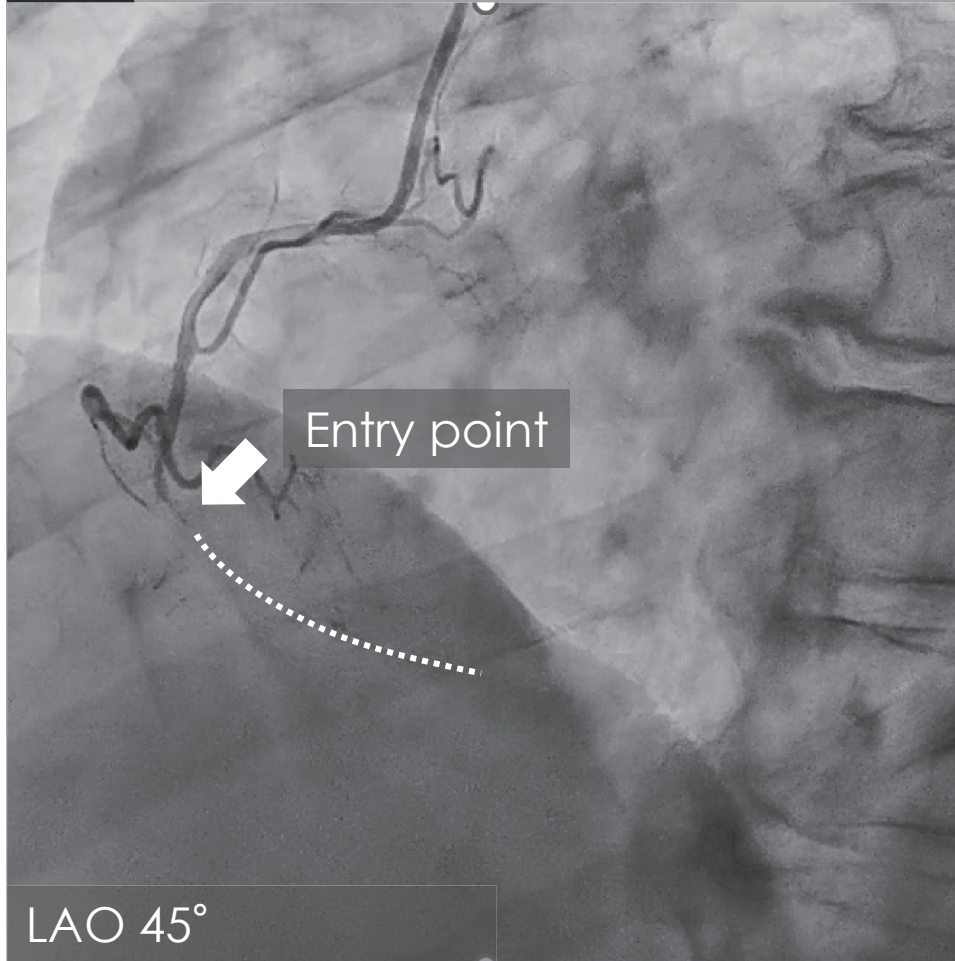
Latest CAG findings ■ '25.09.25
Mid. RCA 100 %

LV EF ■ 62 % (UCG), inferior akinesis,
moderate AS

J-CTO score ■ 3



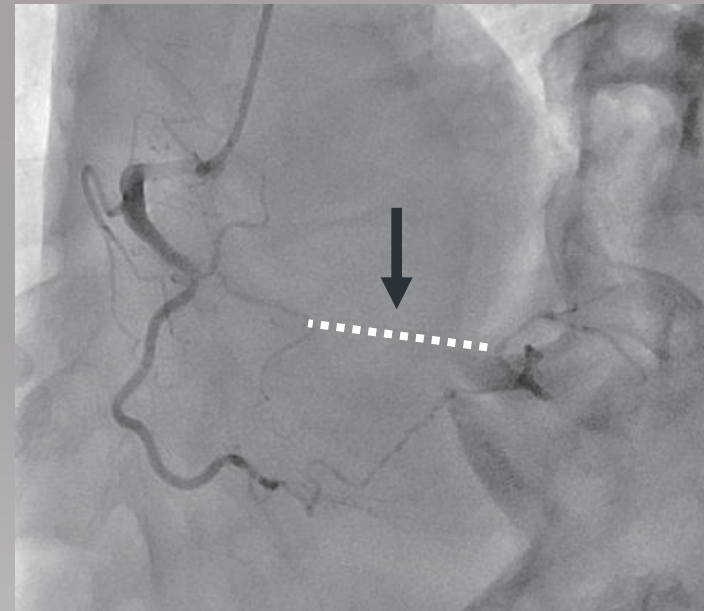
Entry/ Exit and collateral information



Utsunomiya Case 1

70's male Target Lesion: mid. RCA(CTO)

Diagnosis	■	AP
Prior intervention	■	No prior PCI
Coronary risk factor	■	DM HT
eGFR	■	68
Syntax score	■	9
Latest CAG findings	■	01/AUG/2025 RCA CTO
LV EF	■	61%(UCG)
J-CTO score	■	2

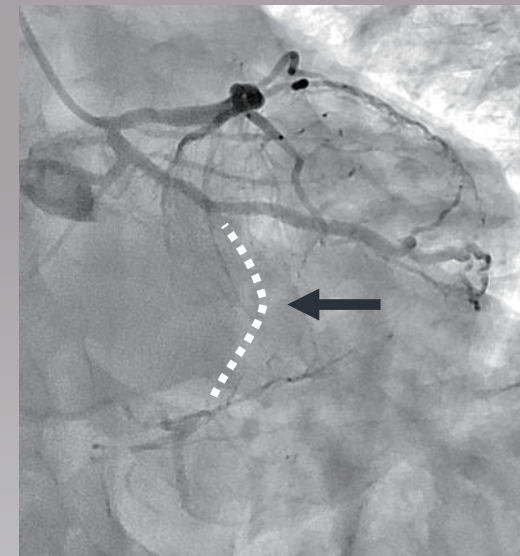


LAO Cranial View

Utsunomiya Case 2

60's male Target Lesion: mid. LCX(CTO)

- Diagnosis** ■ AP
- Prior intervention** ■ 2016 LCX STEMI (CK 3700, OM U-SES 2.5-18)
2025.5 Rt. CIA-EIA (BNS 8.0-100-200)
2025.6 Rt. CFA-CIA ISO (POBA)
- Coronary risk factor** ■ Past smoking
- eGFR** ■ 64
- Syntax score** ■ 10.5
- Latest CAG findings** ■ 11/June/2025
LCX CTO
- LV EF** ■ 70% (UCG)
- J-CTO score** ■ 2

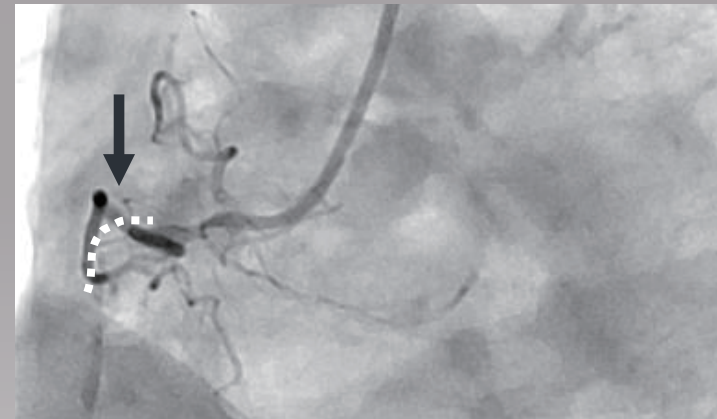


AP Caudal View

Utsunomiya Case 3

60's male Target Lesion: prox. RCA(CTO)

- Diagnosis** ■ AP
- Prior intervention** ■ 2025/7 prox. LAD (CoCr-EES 3.5-15)
- Coronary risk factor** ■ DM
- HT
- past smoking
- eGFR** ■ 72
- Syntax score** ■ 7
- Latest CAG findings** ■ RCA CTO
- LV EF** ■ 56% (UCG)
- J-CTO score** ■ 1

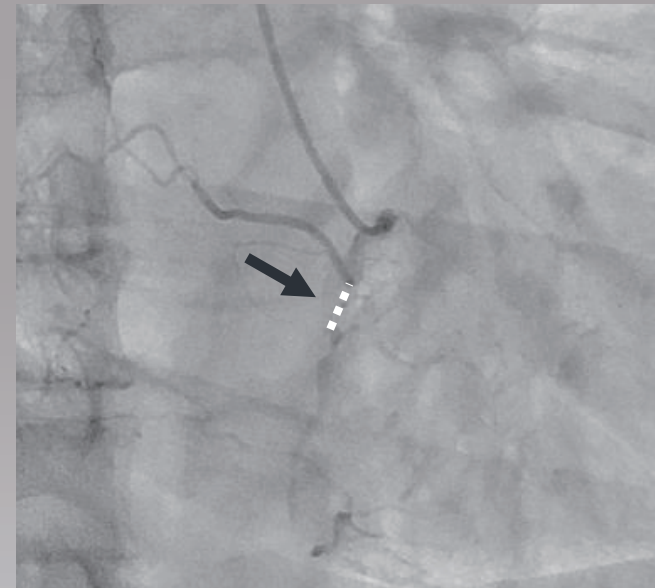


LAO View

Utsunomiya Case 4

60's male Target Lesion: prox. RCA(CTO)

Diagnosis	■	AP
Prior intervention	■	No prior PCI
Coronary risk factor	■	HT DL
eGFR	■	61
Syntax score	■	14
Latest CAG findings	■	RCA CTO
LV EF	■	56% (UCG)
J-CTO score	■	9



RAO View